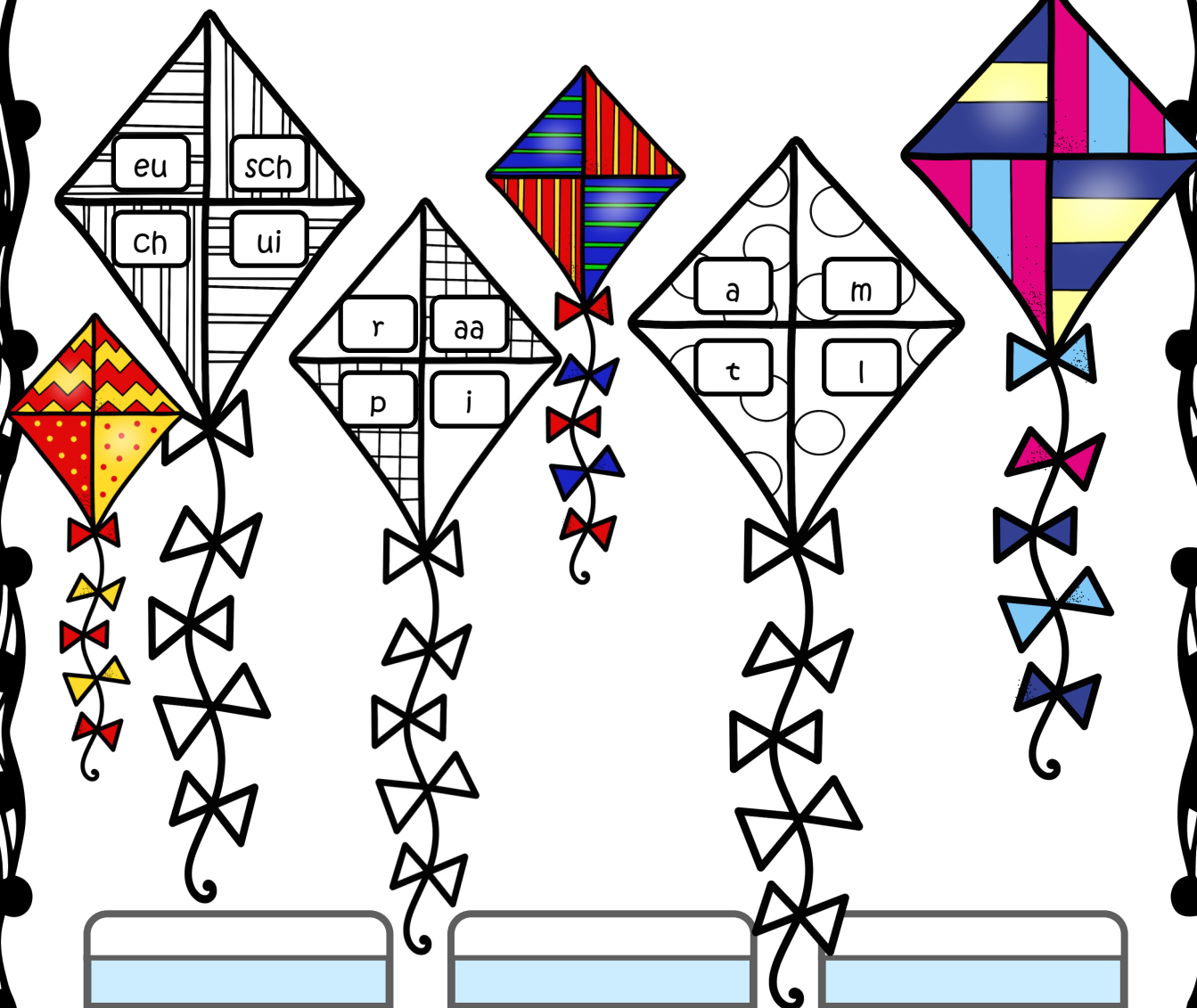
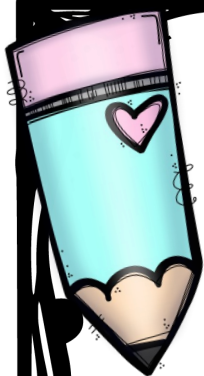


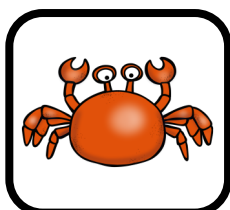


maak woorden met deze letters.





verbind de woorden en plaatjes.



krab

lucht

ring

schaap

zink

bed



Lees de zin en zoek het juiste plaatje.

Pim ruikt aan de bloem.



Ik wil naar de speel-tuin.



Papa graaft een put.



Bas zwiert heen en weer.





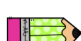
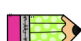

Fem giet de grond nat.



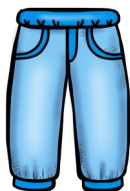


Kleur de was in de juiste kleur.



-  Kleur het hemdje blauw.
-  Kleur de hand-doek groen.
-  Kleur het bloesje rood.
-  Kleur het rokje paars.
-  Kleur het broekje geel.

Wat zie je? Zoek en schrijf.



k b o e r



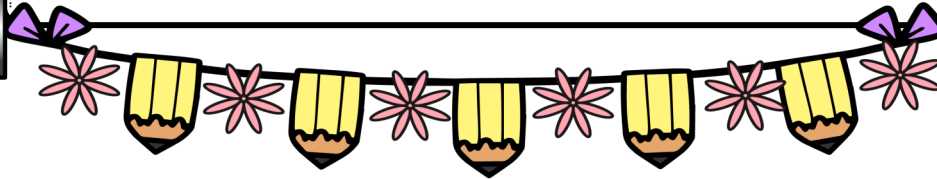
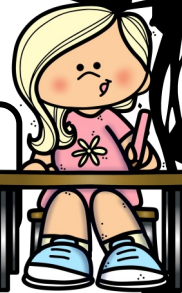
o e s c h n



k j r u



Schrijf het woord bij het plaatje.

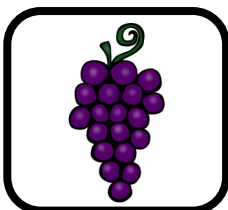




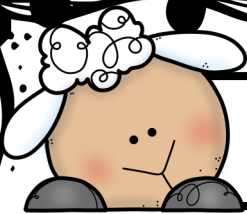






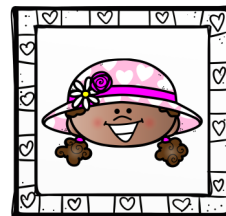
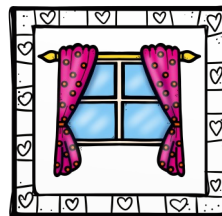
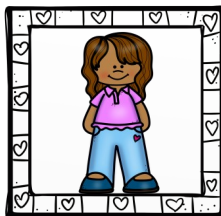
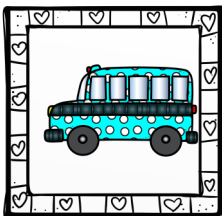
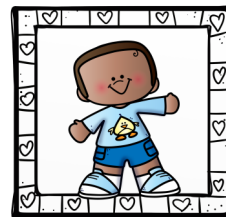
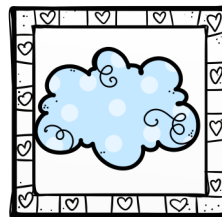
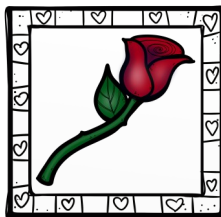
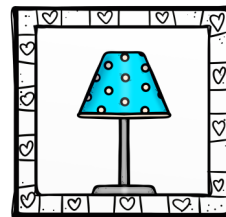
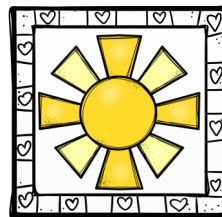
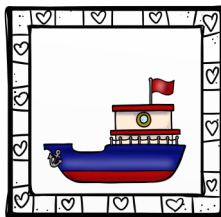
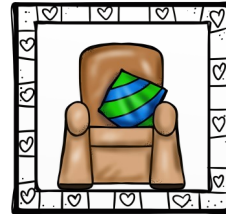
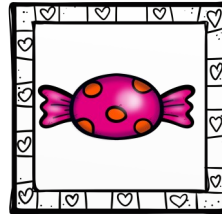
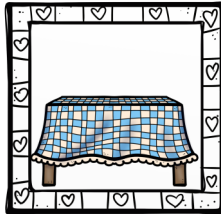
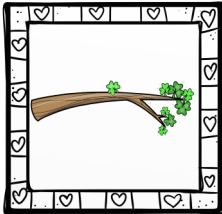






Kleur het woord en het plaatje in dezelfde kleur.

naam:



☐ takje

☐ zoentje

☐ busje

☐ roosje

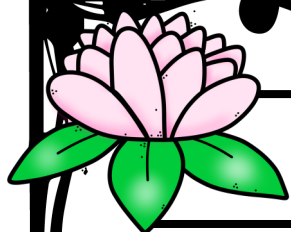
☐ raampje

☐ bootje

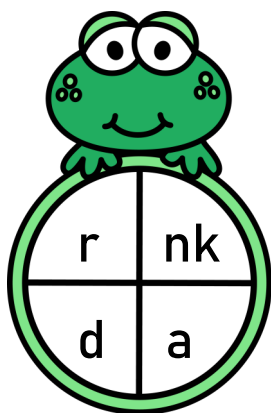
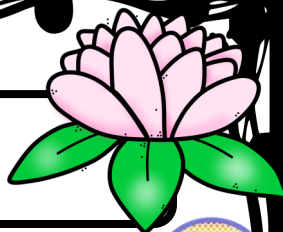
☐ snoepje

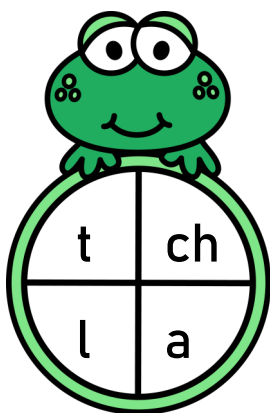
☐ lampje

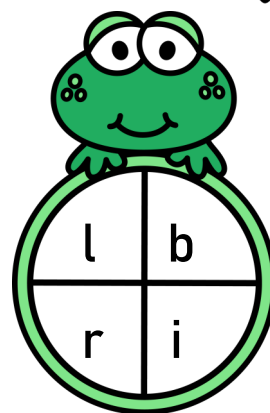


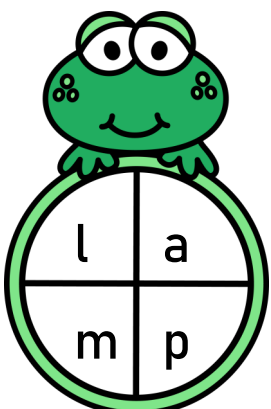


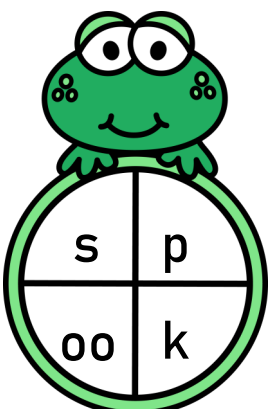
Zoek het woord en schrijf.

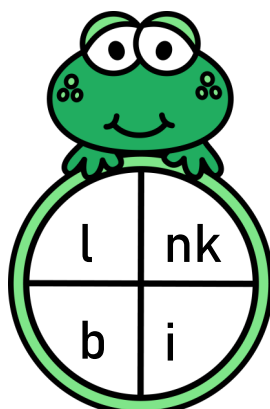


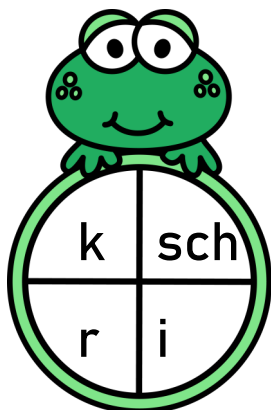


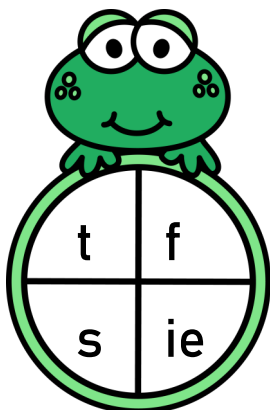


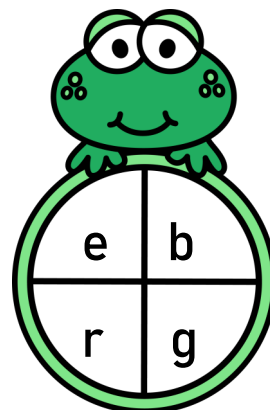




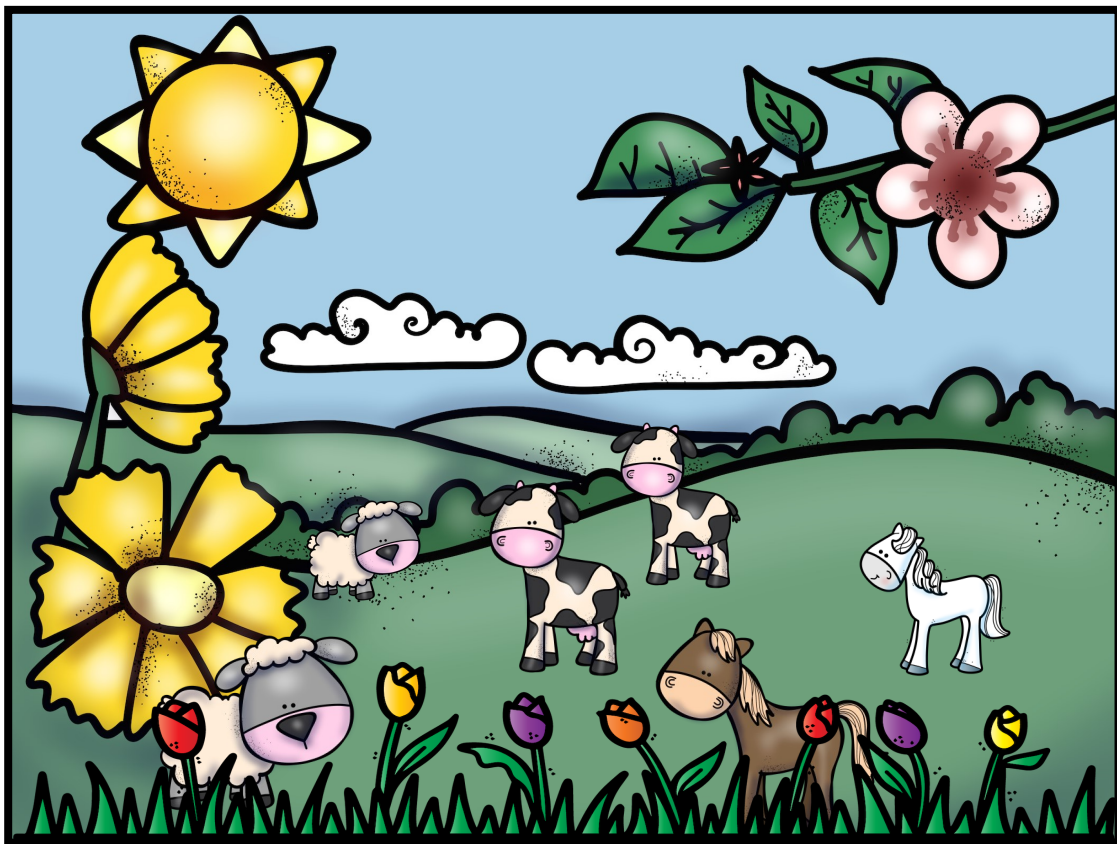








Kan je zinnen bedenken bij deze plaat?







Vul de zinnen aan met het juiste woord.

De staat klaar.



De som van vier en vier is



De vliegt in de lucht .



Wat een mooie



In het gras staat een



Verbind de woorden met de plaatjes.

tang

licht

schiet

denk



vecht

stink

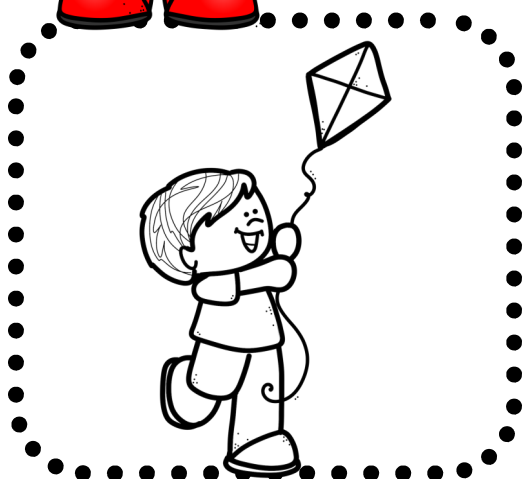
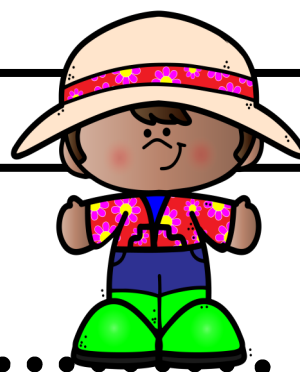
bang

schat

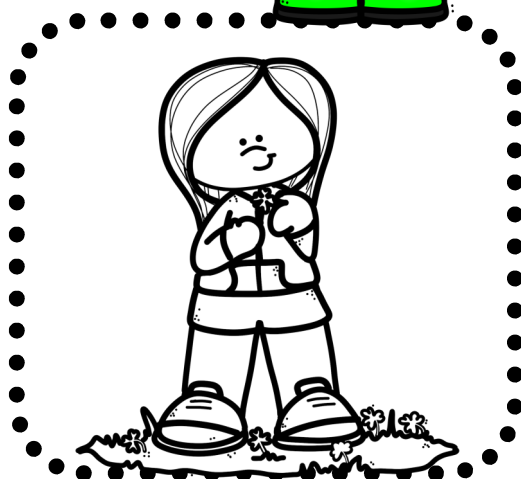




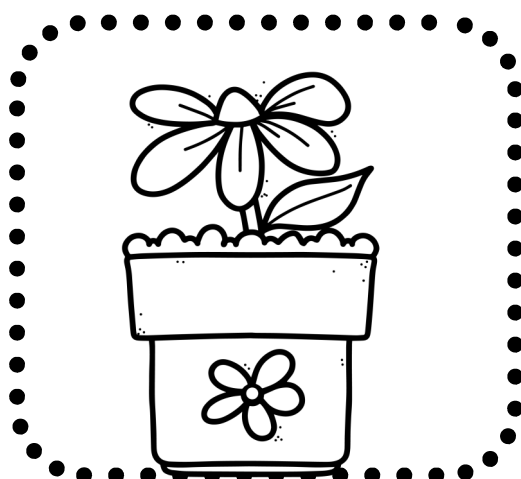
Maak de tekening af.



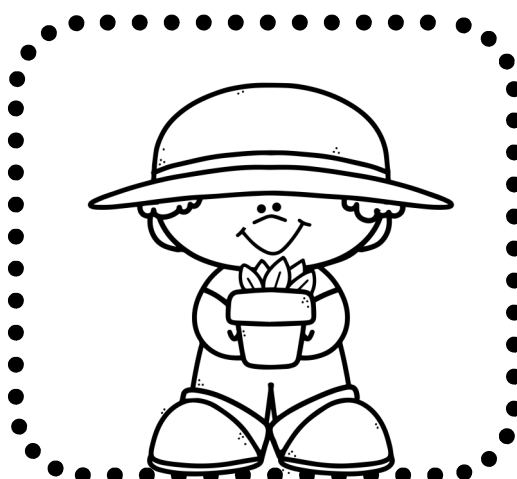
De lucht is blauw
en de zon schijnt.



Naast het meisje
zit een muisje.



De bloem in de
bloem-pot is rood.



Ver-sier de hoed
van Jip .



Lees en kleur.

Het is nacht.

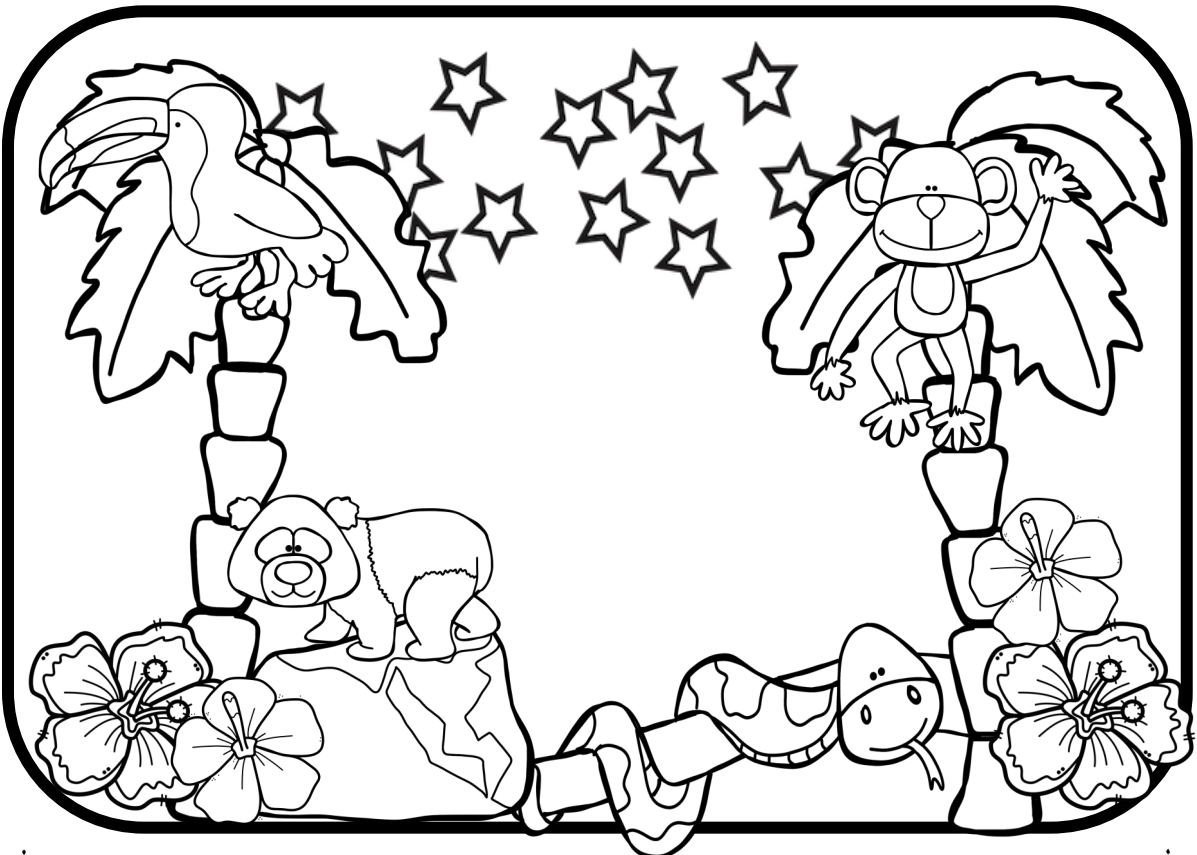
De slang op de brui-ne tak is groen.

De pan-da op de rots is zwart en wit.

De aap die in de boom hangt is bruin.

De bek van de toe-kan is oranje.

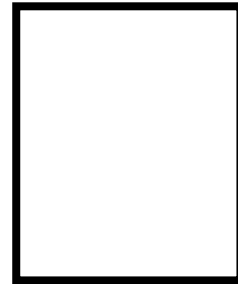
De bloe-men zijn geel, roze, blauw en paars.



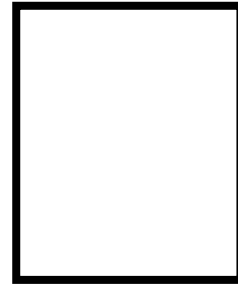


Plak het juiste plaatje bij de zin.

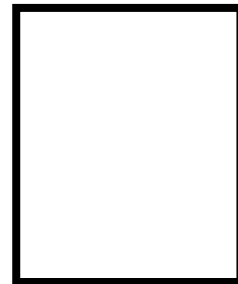
Sien springt in de plas .



Tim zoekt een aard-bei in de struik .



kim klimt in de boom .



De mus fluit een liedje .

